

HURCO®



PRECI-FLEX® The Flexible Tool System



EXSYS

EPPINGER

EXSYS Tool, Inc.

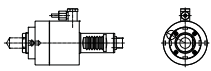
T: 800.397.9748

P: 352.588.4345

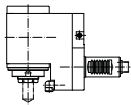
F: 352.588.4821

www.hurcotooling.com

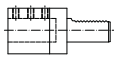
TMM8 (VDI 30)



3.200.625 External Coolant
3.200.690 Internal Coolant
 • Axial Collet Chuck ER25
 • **PRECI-FLEX®**



3.200.671 External Coolant
3.200.743 Internal Coolant
 • Radial, Left Hand - Right Hand
 • Short Collet Chuck, ER25
 • **PRECI-FLEX®**



212.015.2XX
 • Boring Bar Holder DIN 69880
 • Type E2 for inch tools
 • External and Internal Coolant
 • Available in 5/16" - 1 1/2"



212.105.250 External Coolant
 • Rectangular Transverse Tool Holder
 • Overhead, Right Hand, Short
 • Type B3 for Inch Tools



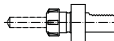
222.105.250 External Coolant
 • Rectangular Transverse Tool Holder
 • Overhead, Right Hand, Long
 • Type B7 for Inch Tools



212.125.250 External Coolant
 • Rectangular Lengthwise Tool Holder
 • Overhead, Right Hand
 • Type C3 for Inch Tools



212.665.220
 • Cut-off tool holder
 • Height Adjustable
 • Type C, DIN 69880

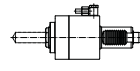


222.040.090 = ER25
222.035.220 = ER32
222.045.220 = ER40
 • Collet chuck DIN 69880-E4 30x25
 • Type E4 for Collets
 • ER 25 Collet

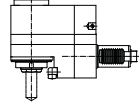


212.500.150 Form E4
 • Blanking Plug Type Z2
 • DIN 69880-Z2-30 (steel)

TMM10 - (VDI 40)



4.200.870 External Coolant
4.200.875 Internal Coolant
 • Axial Collet Chuck ER32
 • **PRECI-FLEX®**



9.707.267 External Coolant
9.709.267 Internal Coolant
 • Radial, Left Hand - Right Hand
 • Short Collet Chuck, ER32
 • **PRECI-FLEX®**



213.105.250 External Coolant
 • Rectangular Transverse Tool Holder
 • Overhead, Right Hand, Short
 • Type B3 for Inch Tools



223.105.250 External Coolant
 • Rectangular Transverse Tool Holder
 • Overhead, Right Hand, Long
 • Type B7 for Inch Tools



213.125.250 External Coolant
 • Rectangular Lengthwise Tool Holder
 • Overhead, Right Hand
 • Type C3 for Inch Tools



213.640.220
 • Cut-off Tool Holder
 • Height Adjustable
 • Type C, DIN 69880



213.015.2XX
 • Boring Bar Holder DIN 69880
 • Type E2 for Inch Tools
 • External and Internal coolant
 • Available in 3/8" - 2"

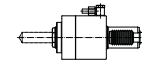


223.040.090 = ER25
223.035.220 = ER32
223.045.220 = ER40
 • Collet chuck DIN 69880-E4-40x32
 • Type E4 for Collets DIN 6499

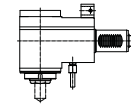


213.500.150 Form E4
 • Blanking Plug Type Z2
 • DIN 69880-Z2-40 (steel)

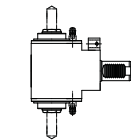
TMX8 / TMX10 (MY,MYS)



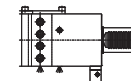
4.200.870 External Coolant
4.200.875 Internal Coolant
 • Axial Collet Chuck ER32
 • **PRECI-FLEX®**



4.200.965 External Coolant
4.200.975 Internal Coolant
 • Radial, Left Hand - Right Hand
 • Double Serrated, ER32
 • **PRECI-FLEX®**



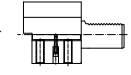
4.201.185 External Coolant
 • Radial
 • Double Sided
 • Ratio: 1:1 ER32



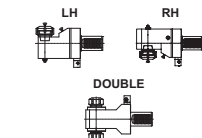
7.160.260 Ext/Int Coolant
 • Boring Bar Holder
 • 1 1/2" (38.1mm)



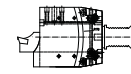
223.110.250
 • Deep Face Cutting
 • 1" Square Shank Hobber



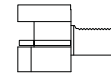
213.125.250
 • OD Cutting
 • 1" Square Shank Holder



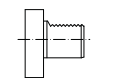
Static Collet Chuck
7.160.254 Left Hand Main Spindle
7.160.255 Right Hand Sub Spindle
7.160.256 Double Sided RH-LH Sub Spindle
 • Centerline = 100mm



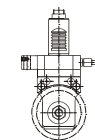
7.160.257
 • Cut off Tool Holder
 • Shank 32mm
 • Double Serrated



213.140.250
 • Multi Seated Holder
 • Main, Sub Spindle, Face
 • 1" Square Shank Holder



213.500.150 Form E4
 • Blanking Plug Type Z2
 • DIN 69880-Z2-40 (steel)



7.160.258
 • Gear Hobber, Arbor Size 3/4"
 • Ratio: i=3:1
 • Torque Output = 150Nm

Don't see what you need? More tooling available on our website